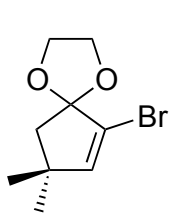


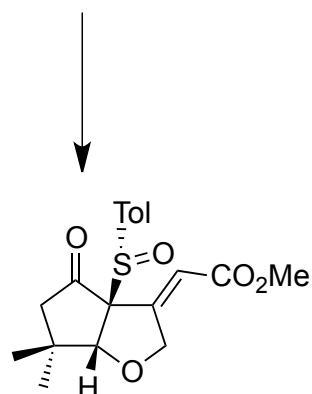
Worksheet 22



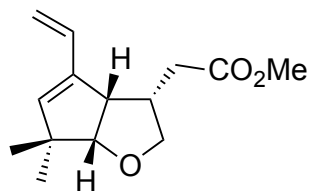
1. *n*BuLi, THF, $-78\text{ }^{\circ}\text{C}$,
then (*S*)-menthyl
p-toluenesulfinate, 77%
2. CSA, acetone/ H_2O , r.t.,
15h, quant.



1. 10 bar H_2 /Raney Ni
THF/MeOH,
r.t. 4h, 88%
2. KHMDS, PhNTf₂,
THF, $-78\text{ }^{\circ}\text{C}$, 3h,
98%



- 1.
- 2.



1. LiAlH_4 , THF,
 $20\text{ }^{\circ}\text{C}$, 30 min., 94%
2. MsCl, NEt_3 , $0\text{ }^{\circ}\text{C}$, 1.5h
NaI, NaHCO_3 , acetone,
 $20\text{ }^{\circ}\text{C}$, 15h, 79%



